

Car-O-Tronic™ Vision2 X1 & X2

Electronic measuring system
with Vision2 X1 or Vision2 X2 Software



CAR-O-LINER®

The most advanced, easy-to-use

Powerful and accurate

The Car-O-Tronic™ Vision2 electronic measuring system for collision damage repair is one of the most powerful systems available on the market today. The sensor-equipped measuring slide with protective rubber “bumper-zones” delivers real-time data three times per second to the advanced and easy-to-use Vision2 **X1** (Lower body only) or Vision2 **X2** (Lower + Upper Body) software. Photo-based, and backed by Car-O-Data, the world’s most comprehensive vehicle database, it allows you to accurately and quickly target measuring points.

Easy to learn and use

The system is simple to learn and use with automatic centering and measuring abilities, few measurement steps, user-friendly menus and access to the unique Infocenter. Document the entire repair process in pictures with text and e-mail files to insurance companies directly from within the software.

Sensor Equipped Measuring Slide

The Measuring Slide communicates wirelessly with the Car-O-Tronic Vision2 software. Through sensors in each joint and a measuring head underneath, it delivers real-time measuring data three times per second. Height measurements are conducted by using one of the various height-adapters.

Select the tube you want to use, and the Car-O-Tronic measuring arm instantly recognizes its height and measures precisely, sending the results instantly to the PC screen.



“Plug-in” slot for fast and easy mounting of measuring parts

Smart LED lamp shines green when you are on target and red when you're not

Ergonomic rubber grip for easy transport

The sensors in each joint deliver real-time data three times per second

Totally Compatible with Any Bench

Adapter kits make the system fully compatible with almost any alignment bench. Car-O-Tronic is easy to move because of its small size. Analysis and diagnosis of damage can be accomplished even before raising the vehicle on the repair bench. You save time and keep bench systems free.

measuring system on the market

Measuring Bridge



The measuring slide mounts and moves on the Measuring Bridge, which has microscopic markings in its rails to enable the measuring head beneath the slide to determine its horizontal position. Available in 4, 5 & 6 meter lengths.

Rubber "Bumper Zones" around key areas protect the Measuring Slide as well as vehicles



Changing battery packs is easy – just eject and reload!

Features and Benefits

- **Wireless** – no targets, sensors or lasers
- **Compatible** – with nearly any frame system
- **Use with Car-O-Data** – comprehensive database for over 15,000 cars, trucks and SUVs
- **Integrated remote control** – puts the work at your fingertips
- **Measuring Parts included** – reach any-place under the vehicle
- **HMP adaptor included** – for upper body measuring (Vision2 X2)
- **Sensors in each joint** – deliver real-time data 3 times per second
- **Precise, 3D measurements** – for all under- and upper- body locations
- **Photo-based images** – offer easy point identification

Hardware & Accessories

Car-O-Tronic Classic Measuring Slide

High Measuring Point Adapter

Measuring Bridge in several lengths

Measuring Parts

PC Cabinet (Optional)

Monitor Cover (Optional)

Support Stand (Optional)

Adapter Kits (Optional)

Optional Hardware

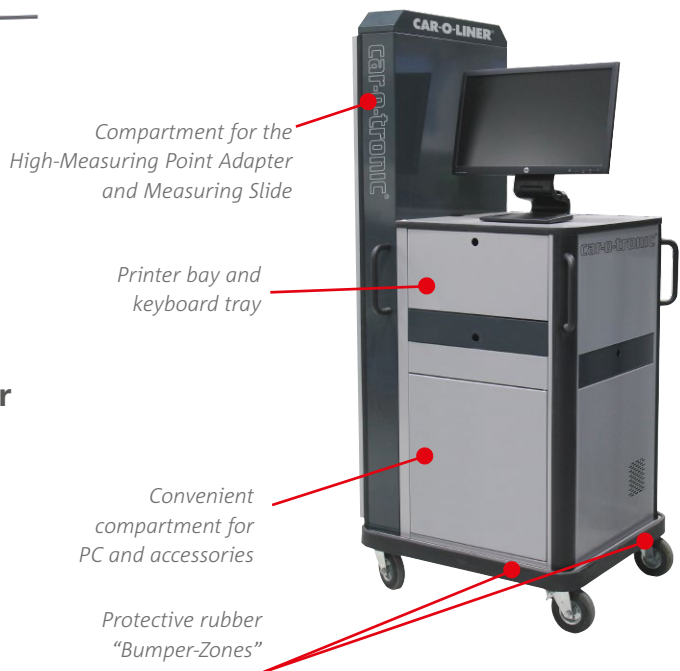
High Measuring Point Adapter

Upper-body measuring is simple and accurate with the High-Measuring Point Adapter.



PC Cabinet

The protective PC Cabinet offers easy access to your computer, monitor and printer. The Measuring Slide stores together with the High-Measuring Point Adapter inside the cabinet. (Monitor & PC sold separately)



handEye™

Wireless mobile software application for iOS and Android



handEye is a totally new, innovative application that works with the Vision2 software. It makes measuring easier and faster than ever before by communicating with the PC via wireless network technology thereby eliminating the need to move back and forth to the PC screen. The information is now in your hand!

If equipped with a magnet, your device can be attached to the car to keep both your hands free. The precision of handEye makes it an efficient tool for any body shop!



Get handEye at the App Store for iOS, Apple



Get handEye at Google Play for android



Support Stand

With the M802 optional support stand, analysis and diagnosis can be performed even before lifting

the vehicle on the repair bench, thus saving time and freeing your bench systems.

CAR-O-DATA

The world's largest vehicle measurement database

Virtually every vehicle on the road today can be found in Car-O-Liner's vehicle information database which contains measurements for more than 15,000 vehicles.

Car-O-Data is seamlessly integrated with Vision2 software and consistently provides access to current and reliable data. With all crucial references at your fingertips it is certain to be a profitable addition to your business!

New and updated vehicle models are continuously measured by our international team of trained measuring engineers. All measurements are made in close cooperation with vehicle manufacturers around the world.

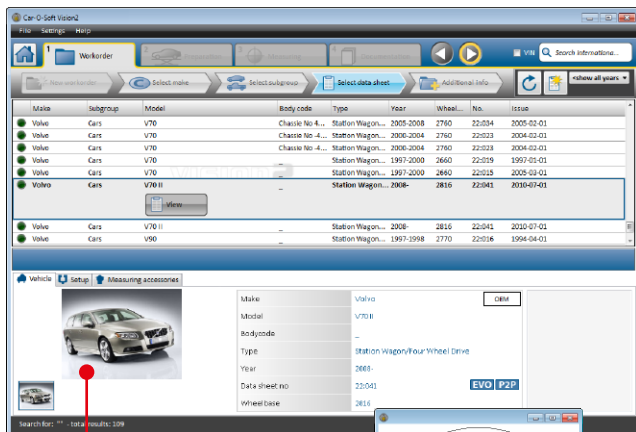
The Car-O-Data Index – accessible from the InfoCenter menu – lets you update your vehicle database in an instant over the Internet. Every day new

interim data sheets and reference data for numerous new and older vehicle makes and models are available for download.

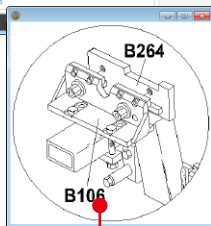
1-year subscription to Car-O-Data available

Car-O-Tronic is delivered with a 14-day trial subscription to Car-O-Data. One-year subscriptions may be purchased. Subscribers have instant access to updated vehicle data and software via the Internet.

Increase both repair quality and profits. With our comprehensive measuring data you will see an immediate improvement in the quality your technicians put into every repair. Our measuring specifications increase the productivity and the efficiency of the work – twin prerequisites for your profitable business.



Car-O-Data provides thousands of detailed images and data.



Click on Setup to find Car-O-Data's detailed clamping information



Stay current with continuous updates via the Internet-based Car-O-Data or receive quarterly vehicle data updates on DVD.

Car-O-Data Database Subscription

- Vehicle database covering over 15,000 models
- Seamless integration with Vision2 X1 & Vision2 X2 software
- Continuous instant access to the program updates and the latest vehicle measurements through internet download. Quarterly updates are available via DVD.

* Requires internet connection

Vision2 X1 & Vision2 X2

Advanced software guides the entire repair process

Now 20% faster than before!

Vision2 is part of the Vision system, Car-O-Liner's state-of-the-art measuring software that guides the entire repair process and performs automatic centering, measuring and documentation.

The brand new Vision2 interface, with super user-friendly graphics, is so easy to use that technicians can now measure damaged vehicles 20% faster than when using previous versions of Vision software.

Photo-based Vision2 is integrated with Car-O-Data, the world's largest vehicle database, making it easy to find all the vehicle information you need when connected to the internet. With over 15,000 measured vehicles it's even easier to find correct measuring points — now with 3D presentation!

All these features working together contribute to reduced cycle times and create accurate and efficient alignment work.

Vision2 X1

System for lower-body measuring.

Vision2 X2

System for lower- and upper body measuring.

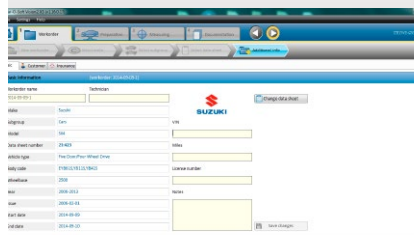
Extra Equipment in Vision2 X2: High Measurement Point (HMP) Adapter.

Super-fast results with only three measuring steps:

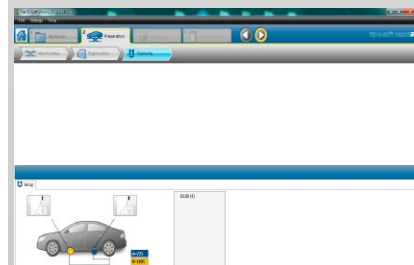
1 Start measuring by registering a work order and entering car make and model.



It is easy to get started. Simply start the Vision2 software and choose to either Create New Work Order or Open Existing Work Order.

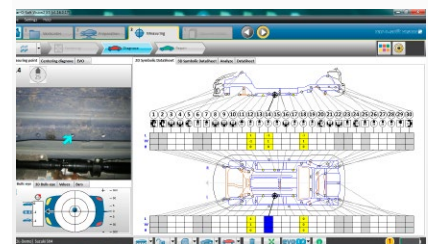


Submit customer data and insurance information under the Customer and/ or Insurance tab.

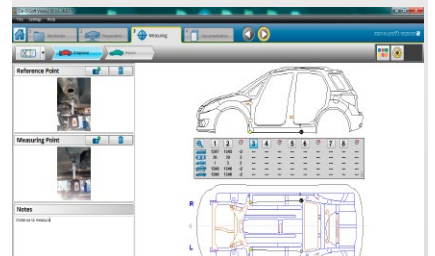


After submitting the general vehicle specifications you receive all the crucial information required – where to put the clamps, what extra equipment you may need and much more!

2 Conduct automatic centering and measuring of the vehicle at the same time.



Just press the bull's-eye shaped button for automatic measuring. The ASP (Automatic Search Point) function displays photos of the measuring points automatically on-screen as the Measuring Slide moves from point to point.

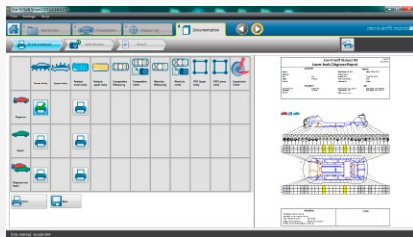


In Absolute and Comparative measuring modes it is possible to describe, with photos and in text, how the different points have been measured.

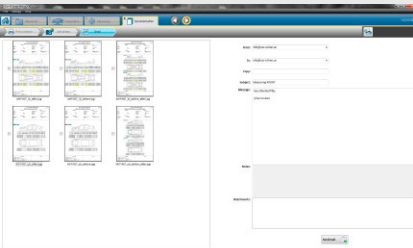


When measuring during alignment you can easily zoom in on specific details for maximum control.

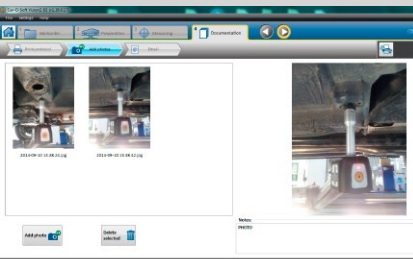
3 Print out the measuring results and you are finished!



Under the Documentation tab you will be able to create documents verifying that the vehicle is restored to pre-accident condition. Choose from 15 alternative documents.

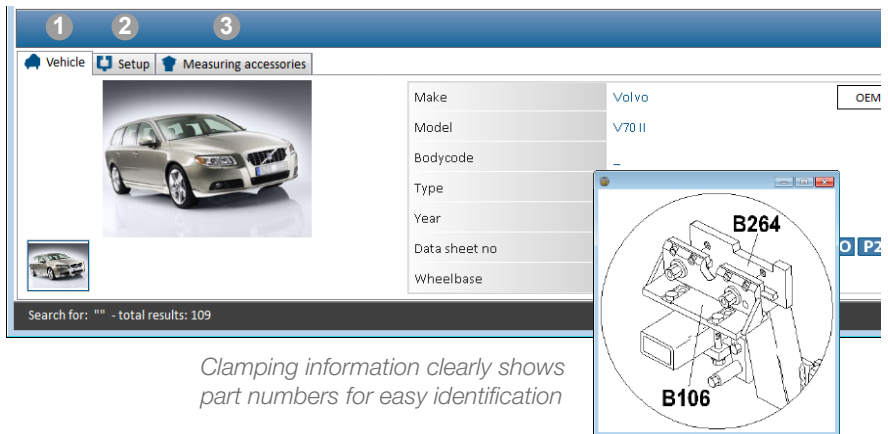


Vision2 has extensive features for documentation. These documents may include photos and can be printed, exported or e-mailed to insurance companies and customers.



Use the Viewer to choose the photos you want to attach to your e-mail.

i **The Infocenter** is always accessible and provides almost unlimited possibilities for updating vehicle data, news, support and interactive training.



Clamping information clearly shows part numbers for easy identification

1 Vehicle Info

Under the Vehicle tab you'll find information such as a photo of the chosen vehicle, the vehicle's datasheet number and the wheelbase.

2 Set-Up

Information regarding which clamps to use and where to attach them may be found under the Setup tab. Diagrams help you to find the correct equipment and position.

3 Measuring Accessories

Under this tab is information regarding accessories.

The Vision2 software system requirements are:

- Operating system: Microsoft® Windows XP SP3 Professional or newer
- Internet (recommended)
- For more detailed system requirements please contact info@car-o-liner.se
- For complete instructions and additional information such as vehicle set-up and vehicle measuring, suitable adapters, accessories, clamp charts, etc., see the Vision2 X1 & Vision2 X2 Instruction Manual.

Car-O-Liner™ is a global provider of high-quality, technologically-advanced collision repair equipment to the automotive aftermarket. For more than 40 years, we have supplied the industry with innovative solutions, technical development, training and customer support. Over 55,000 Car-O-Liner collision repair systems are in use worldwide.

According to our customers, Car-O-Liner's collision repair equipment is the best made, the easiest to learn and use, and includes everything needed to reduce cycle times and increase profits. With Car-O-Liner equipment in your shop, your customers - the vehicle owners and insurance companies - will experience safety and complete satisfaction from your work.

Car-O-Liner's headquarters are located in Gothenburg, Sweden, with manufacturing operations in Kungsör. Subsidiaries are located in Sweden, Norway, USA, Great Britain, France, Germany, Singapore, India and China, and distributors can be found in more than 70 countries.

Car-O-Liner is recognized for its leadership in the marketplace by continuously delivering high quality products and exceptional customer service.



car-o-liner.com



CAR-O-LINER®

Car-O-Liner AB • Hulda Mellgrens Gata 1 • SE-421 32 Västra Frölunda
Telephone +46 31 721 10 50 • www.car-o-liner.com • info@car-o-liner.se